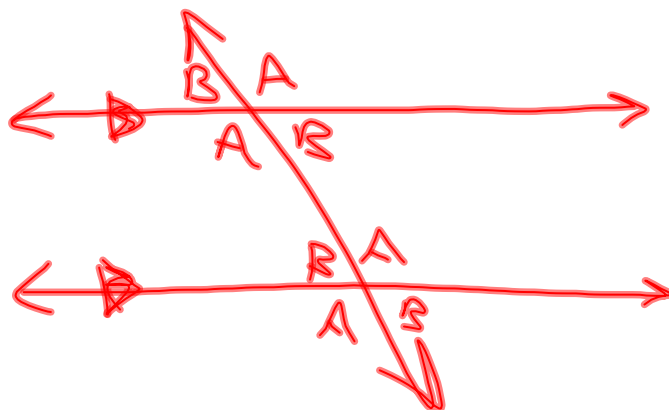


Bellwork:

Draw two parallel lines crossed by a transversal. Label the angle pairs A and B



Chapter 3.1: Identify Pairs of Lines and Angles

Parallel Lines: *same distance apart (do not intersect)*
must be coplanar

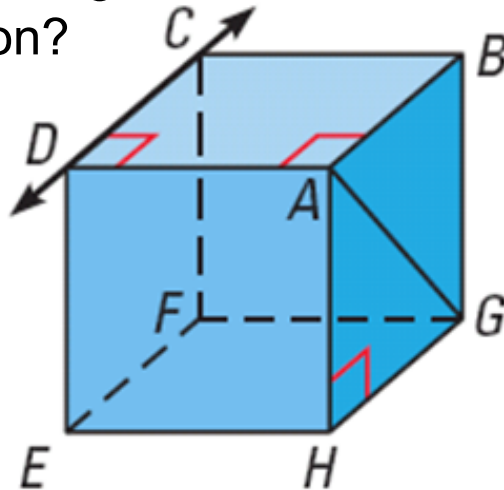


Skew Lines:
never intersect
different planes

Parallel Planes:

Planes that are the same distance apart

Look at the figure, What matched the description?



- Parallel to CD through A
- Skew to CD through A
- Perpendicular to CD through A
- Parallel to plane EFG containing A

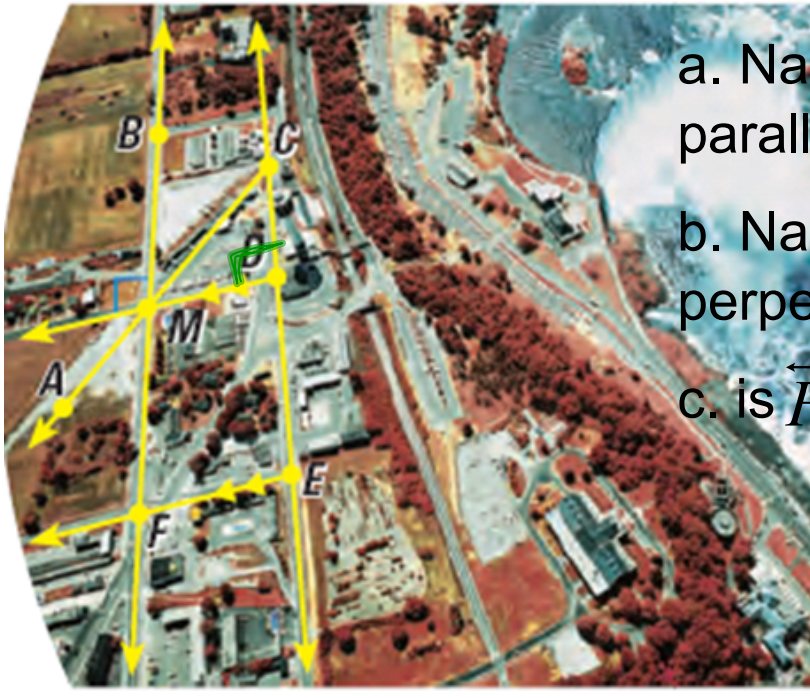
Two lines in a plane are either parallel or intersecting.

Parallel Postulate: if there is a line and a point not on that line, then there is one line through the point that is parallel to the given line.

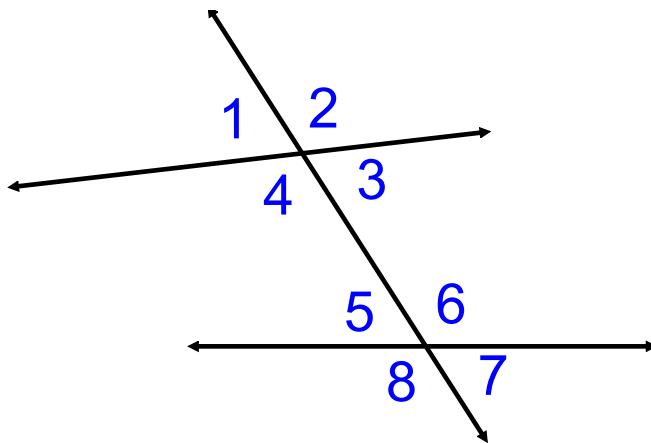
picture

Perpendicular Postulate: If there is a line and a point not on that line, then there is one line through the point that is perpendicular to the given line.

ex.



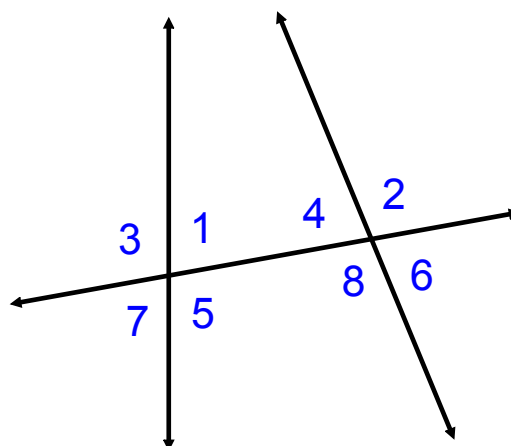
- a. Name a pair of parallel lines
- b. Name a pair of perpendicular lines
- c. is $\overleftrightarrow{FE} \parallel \overleftrightarrow{AC}$?



- Corresponding Angles: 2,6 ●
- Alternate Interior: 3,5 ●
- Alternate Exterior: 1,7 ●
- Consecutive Interior: 4,5 ●

ex. Identify the angle pairs:

- 4 pairs*
a. corresponding
- 2*
b. alternate exterior
- 2*
c. alternate interior
- 2*
d. consecutive interior



Homework: Chapter 3.1 pg.150
#s 3-6,11-14,18-27